

Vertical Cable Management

Half-height Vertical Lacing Bars - Blank - Formed Steel - 3.5" Wide



- Bar allows half-height vertical cable lacing
- Order two (2) to cover full frame height
- Add 1/4 Turn Cable Rings or Fiber Spools as req'd
- 3.5" Wide for cable lacing
- Material: 16 GA (0.060") steel
- Slots allow Velcro or other cable straps to neatly organize cable bundles
- Includes hardware to mount to front-to-back frame members
- Color: Black

3.5" Wide Half-height	Fits Frame Height
LHBV3-40-2	40U
LHBV3-42-2	42U
LHBV3-45-2	45U
LHBV3-47-2	47U
LHBV3-48-2	48U
LHBV3-50-2	50U

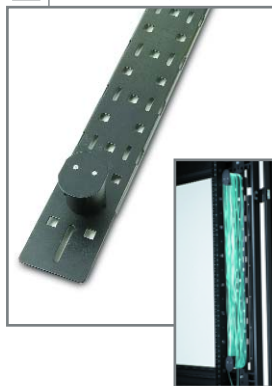
Half-height Vertical Lacing Bars - 4 Removable Rings - Formed Steel - 3.5" Wide



- Includes (4) 1/4 turn removable rings - relocate
- Bar allows half-height vertical cable lacing
- Order two (2) to cover full frame height
- Add additional 1/4 Turn Cable Rings or Fiber Spools as req'd
- 3.5" Wide for cable lacing
- Material: 16 GA (0.060") steel
- Slots allow Velcro or other cable straps to neatly organize cable bundles
- Includes hardware to mount to front-to-back frame members
- Color: Black

3.5" Wide Half-height	Fits Frame Height
LHBV3-40-RR-2	40U
LHBV3-42-RR-2	42U
LHBV3-45-RR-2	45U
LHBV3-47-RR-2	47U
LHBV3-48-RR-2	48U
LHBV3-50-RR-2	50U

Half-height Vertical Lacing Bars - 2 Fiber Spools - Formed Steel - 3.5" Wide



- Includes (2) removable fiber spools
- Bar allows half-height vertical fiber loop
- Order two (2) to cover full frame height
- Add additional 1/4 Turn Cable Rings or Fiber Spools as req'd
- 3.5" Wide for cable lacing
- Material: 16 GA (0.060") steel
- Slots allow Velcro or other cable straps to neatly organize cable bundles
- Includes hardware to mount to front-to-back frame members
- Color: Black

3.5" Wide Half-height	Fits Frame Height
LHBV3-40-FS-2	40U
LHBV3-42-FS-2	42U
LHBV3-45-FS-2	45U
LHBV3-47-FS-2	47U
LHBV3-48-FS-2	48U
LHBV3-50-FS-2	50U

Half-height Vertical Lacing Bars - 5 Welded Rings - Formed Steel - 3.5" Wide



- Includes (5) welded/fixed cable rings
- Rings are 3" Wide x 3" Deep
- Bar allows half-height vertical cable lacing
- Order two (2) to cover full frame height
- 3.5" Wide for cable lacing
- Material: 16 GA (0.060") steel
- Slots allow Velcro or other cable straps to neatly organize cable bundles
- Includes hardware to mount to front-to-back frame members
- Color: Black

3.5" Wide Half-height	Fits Frame Height
LHBV3-40-WR-2	40U
LHBV3-42-WR-2	42U
LHBV3-45-WR-2	45U
LHBV3-47-WR-2	47U
LHBV3-48-WR-2	48U
LHBV3-50-WR-2	50U

Vertical Cable Management

Vertical Lacing Bars - Full Height - Flat Steel - 1" Wide



- 1" Wide for cable lacing
- Material: 12 GA (0.105") steel
- Slots allow Velcro or other cable straps to neatly organize cable bundles
- Tapped #10-32 hole every 3" between slots
- Includes hardware to mount to front-to-back frame members
- Color: Black

1" Wide with Slots	Fits Frame Height
LBV1S-40-2	40U
LBV1S-42-2	42U
LBV1S-45-2	45U
LBV1S-47-2	47U
LBV1S-48-2	48U
LBV1S-50-2	50U

Vertical Lacing Bars - Full Height - Flat Steel - 2" Wide with Straps



- 2" Wide with Velcro Straps
- Material: 12 GA (0.105") steel
- Slots allow Velcro or other cable straps to neatly organize cable bundles
- Includes hardware to mount to front-to-back frame members
- Color: Black

2" Wide with Velcro Straps	Fits Frame Height
LBV-40-2	40U
LBV-42-2	42U
LBV-45-2	45U
LBV-47-2	47U
LBV-48-2	48U
LBV-50-2	50U

Vertical Lacing Bars - Full Height - Flat Steel - 3.5" Wide



- 3.5" Wide (no straps)
- Material: 12 GA (0.105") steel
- Slots allow Velcro or other cable straps to neatly organize cable bundles
- Includes hardware to mount to front-to-back frame members
- Color: Black

3.5" Wide with Slots	Fits Frame Height
LBV3-40-2	40U
LBV3-42-2	42U
LBV3-45-2	45U
LBV3-47-2	47U
LBV3-48-2	48U
LBV3-50-2	50U

Vertical Lacing Ladder - 6" Wide



- Provides vertical lacing of large cable bundles
- Material: 0.120" x 3/4"W steel bar
- Includes hardware to mount anywhere along front-to-back frame members
- Color: Black

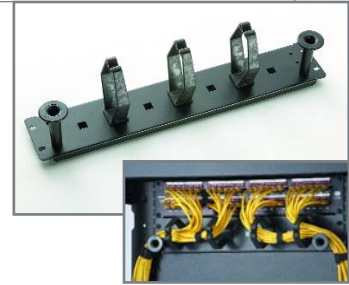
Part Number	Fits Frame Height
LLV-40-2	40U
LLV-42-2	42U
LLV-45-2	45U
LLV-47-2	47U
LLV-48-2	48U
LLV-50-2	50U

Horizontal Cable Management

Horizontal Cable Managers - 3 Removable 1/4 Turn Rings & 2 Spools

Part Number	Rack-mount Compatible	Height
HC2-RRS-19-2	19"	2U

- Cable Manager includes 19" Rack-mountable plate with (3) - 1/4 turn removable cable rings & (2) threaded adjustable spools (SPT-1)
- Dimensions: 2Ux19"Wx5"D
- Material: 16 GA (0.060") steel
- Neatly organizes cables horizontally across rack
- Includes #10-32 screws to mount to EIA mounting angles. Cage nuts ordered separately.
- Color: Black



Horizontal Cable Managers - 4 Removable 1/4 Turn Rings

Part Number	Rack-mount Compatible	Height
HC2-RR-19-2	19"	2U

- Cable Manager includes 19" Rack-mountable plate with (4) - 1/4 turn removable cable rings
- Dimensions: 2Ux19"x5"D
- Material: 16 GA (0.060") steel
- Neatly organizes cables horizontally across rack space
- Includes #10-32 screws to mount to EIA mounting angles. Cage nuts ordered separately.
- Color: Black



Horizontal Cable Managers - 2 Adjustable Spools

Part Number	Rack-mount Compatible	Height
HC2-TS-19-2	19"	2U

- Cable Manager includes 19" Rack-mountable plate with (2) - threaded adjustable spools
- Dimensions: 2Ux19"x3.5"D
- Material: 16 GA (0.060") steel
- Neatly organizes cables horizontally across rack space
- Includes #10-32 screws to mount to EIA mounting angles. Cage nuts ordered separately.
- Color: Black



Horizontal Cable Managers - 2 Large Fiber Spools

Part Number	Rack-mount Compatible	Height
HC2-FS-19-2	19"	1U

- Cable Manager includes 19" Rack-mountable plate with (2) - 2.25" diameter spools - ideal for fiber
- Dimensions: 2Ux19"x3.5"D
- Material: 16 GA (0.060") steel
- Great for looping extra fiber within a rack
- Includes #10-32 screws to mount to EIA mounting angles. Cage nuts ordered separately.
- Color: Black



Horizontal Cable Managers - 5 Welded Rings

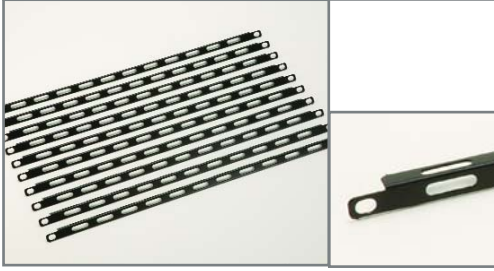
Part Number	Rack-mount Compatible	Height
HC1-19-2	19"	1U
HC2-19-2	19"	2U

- 1U or 2U versions available
- Dimensions: 1Ux19"Wx3.5"D; 2Ux19"x3.5"D
- Ring Size (inside dimensions): 3"x3" (2U Panel); 1.25"x3" (1U Panel)
- Material: 16 GA (0.060") steel
- Neatly organizes cables horizontally across rack space
- Includes #10-32 screws to mount to EIA mounting angles. Cage nuts ordered separately.
- Color: Black



Horizontal Cable Management

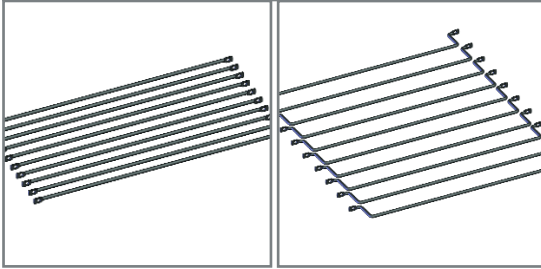
Lacing Bars



- Ship in packs of 10
- Material: 16 GA (0.060") steel
- Slots allow Velcro or other cable ties to neatly organize cable bundles
- Includes #10-32 screws to mount to EIA mounting angles. Cage nuts ordered separately.
- Color: Black

Part Number	Rack-mount Compatible	Kit Qty.
LBT-19-2	19"	10

Lacing Rods



- Provides strain relief for cabling at face of equipment to ensure connectivity
- Available in straight or 2" off set to accommodate varying equipment depths
- For 19" EIA Mounting Angles
- Includes #10-32 screws
- Ship in packs of 10
- Rods are 5/16" Diameter
- Color: Black

Part Number	Style	Rack-mount Compatible	Kit Qty.
LR-19-2	Straight	19"	10
LR2-19-2	2" Offset	19"	10

Accessories

Cable Rings - 1/4 Turn Removable



- Use with Vertical or Horizontal Bars or Mounting Angles compatible with removable rings
- 2.75" Wide x 4.00" Deep (inside dimensions)
- Ship individually or packs of 10
- Color: Black

Part Number	Description
CRR3-1	1/4 Turn Cable Rings, Qty. 1
CRR3-10	1/4 Turn Cable Rings, Pack of 10

Spools & 1/4 Turn Saddles with Hook & Loop Ties



- Spools have 12-24 thread
- Spools are 2.95"D x 1.68"H x 1.68"W
- Use saddles with vertical or horizontal bars or mounting angles compatible with 1/4 Turn removable components
- Hook & Loop Ties are 18" long and include a 1/4 Turn saddle/mounting clips
- Straps harness large cable bundles
- Saddles ship in packs of 10
- Color: Black

Part Number	Description
SPT-1	Threaded Spool, Qty. 1
VRCM-10	1/4 Turn Saddles 18" Ties, 10 Pack

Hook & Loop Cable Ties & Cinch Straps



- Ties are 8" long
- Ties have hole for screw mounting (screws not included)
- Straps are 24" with loop to pull secure
- Straps harness large cable bundles
- Ship in packs of 10
- Color: Black

Part Number	Description
VT-10	8" Velcro Cable Ties, Pack of 10
VCS-24	24" Cinch Straps, Pack of 10

