

Remote Power Monitoring



Smart PDU's

Models: PS-XXX-XX

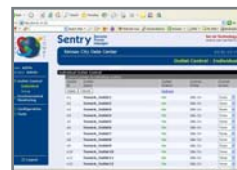
Monitor your power from anywhere!

Smart Power Distribution Units (PDU's) deliver reliable power distribution, local current monitoring via LEDs, current monitoring via IP and environmental (temperature & humidity) monitoring via IP. Increasing power demands and density in the equipment cabinet requires new functionality from your cabinet PDU. The Smart PDU products uniquely meet these demands.

The Smart PDU's LED input current monitoring and network interface allows engineers to utilize the True RMS Power Monitor to precisely measure the current (amps) that network devices are drawing on the power circuit. This allows the engineer to safely load each circuit to its maximum allowable load capacity without the danger of overloading the circuit. Receive SNMP alerts when power or environmental conditions exceed thresholds. Security and communications features include SSL, SSH, MD5, TACACS+ and LDAP.

Features

- **Input Current Monitoring:** Precisely measure the aggregate current draw (in amps) on each power circuit. On-site verification of the input current with the LED digital display. Remote verification via browser or serial screen.
- **Multiple Power Distribution Options:** 120V, 208V and three-phase power options. 20 or 30-Amp power input feed.
- **Single or Dual Circuit Options:** Single or Dual input feeds with varying receptacle styles and densities. Dual feed units cost effectively deliver redundant power to equipment.
- **IP Access & Security:** Web interface, SSL, SSH, Telnet, SNMP or RS-232 access.
- **Environmental Monitoring:** Switched Units support two optional external temperature & humidity probes and reports conditions thru the Web interface.
- **Zero U & Rack-mount models:** Both vertical and horizontal unit form factors are available.
- **SNMP Traps:** Automate alerts for power & environmental conditions.
- **Multiple PDU Access:** Optional software organizes and allows access up to 1,000 Smart PDUs from a single Web interface.

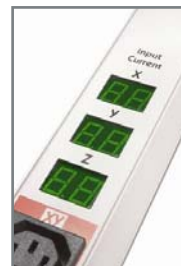


Browser Interface



Branch Circuit Protection

The Smart PDU Family meets the new UL 60950-1 requirement for branch circuit protection. The products meet the above criteria by providing overcurrent protection with UL-listed Bussman SC fuses for each branch circuit.



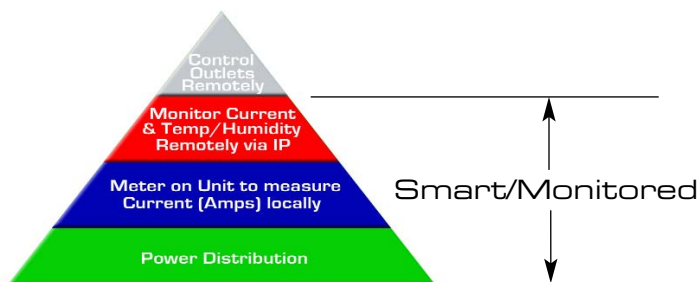
Branch Current Monitoring

The PDU's exclusive True RMS current monitoring is critical to preventing overloads in high-density computing environments. LED digital displays are accessible through IP-access to report the input current of each phase or branch.



Environmental Monitoring

The Smart PDU supports two external probes. Each of these probes measure both temperature and humidity. Reports conditions thru SNMP traps or the Web interface. Receive SNMP-based alert notifications when conditions exceed defined thresholds.



VERTICAL

120V Vertical Units - Zero U Clearance

120 V	Part Number	Amps	Input Voltage Range	Input Connection	Receptacles	Dimensions
	PS-D48-1-C20	20	100-120V 50/60 Hz	(2) IEC C20 Inlets*	(48) NEMA 5-20	63.5" x 3.5" x 2.25"
	PS-D48-1-L530	30	100-120V 50/60 Hz	(2) L5-30P	(48) NEMA 5-20	63.5" x 3.5" x 2.25"

* All C20 inlet input connections require a separate power cord. Cords are ordered separately. Select appropriate source connection as required. See page 4 for cord options & ordering information.



PS-D48-1-C20



C20 Inlet*



NEMA L5-30 Plug

208V Vertical Units - Zero U Clearance

208 V	Part Number	Amps	Input Voltage Range	Input Connection	Receptacles	Dimensions
	PS-24-2-C20	20	208-240V 60Hz	IEC C20 Inlet*	(24) IEC C13	63.5" x 1.75" x 2.25"
	PS-24-2-L630	30	208-240V 60Hz	L6-30P	(24) IEC C13	63.5" x 1.75" x 2.25"
	PS-24-2-L30A	30	208-240V 60Hz	L6-30P	(18) IEC C13 & (6) IEC C19	63.5" x 1.75" x 2.25"
	PS-D48-2-L630	30	208-240V 60Hz	(2) L6-30P	(48) IEC C13	63.5" x 3.5" x 2.25"
	PS-D84-2-L620	20	208-240V 60Hz	(2) L6-20P	(84) IEC C13	66.0" x 3.5" x 2.25"
	PS-D84-2-L630	30	208-240V 60Hz	(2) L6-30P	(84) IEC C13	66.0" x 3.5" x 2.25"

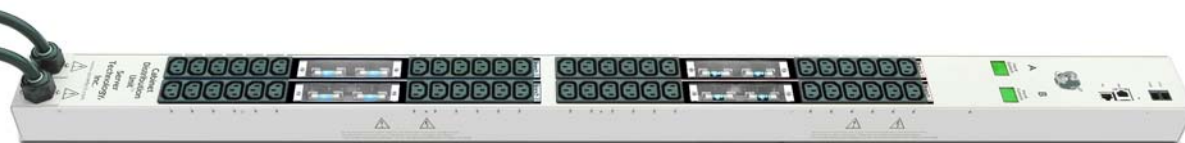
* All C20 inlet input connections require a separate power cord. Cords are ordered separately. Select appropriate source connection as required. See page 4 for cord options & ordering information.



PS-24-2-L630



PS-24-2-L30A



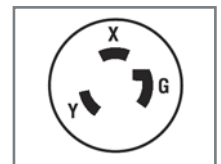
PS-D48-2-L630



PS-D84-2-L630



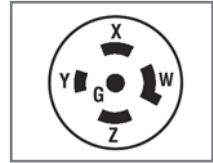
C20 Inlet*



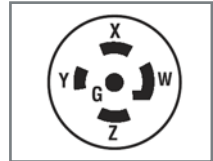
NEMA L6-30 Plug

208V 3-Phase Wye - Vertical Units - Zero U Clearance

Part Number	Amps	Input Voltage Range	Input Connection	Receptacles	Dimensions
PS-21-Y-L2120	20	3 Ph Wye 208V/60Hz	L21-20P	(21) IEC C13	45.0" x 1.75" x 2.25"
PS-24-Y-L2120	20	3 Ph Wye 208V/60Hz	L21-20P	(24) IEC C13	63.5" x 1.75" x 2.25"
PS-24-Y-L2130	30	3 Ph Wye 208V/60Hz	L21-30P	(24) IEC C13	63.5" x 1.75" x 2.25"
PS-24-Y-L20A	20	3 Ph Wye 208V/60Hz	L21-20P	(18) IEC C13 (6) IEC C19	63.5" x 1.75" x 2.25"
PS-24-Y-L30A	30	3 Ph Wye 208V/60Hz	L21-30P	(18) IEC C13 (6) IEC C19	63.5" x 1.75" x 2.25"
PS-D48-Y-L2120	20	3 Ph Wye 208V/60Hz	(2) L21-20P	(48) IEC C13	63.5" x 3.5" x 2.25"
PS-D48-Y-L2130	30	3 Ph Wye 208V/60Hz	(2) L21-30P	(48) IEC C13	63.5" x 3.5" x 2.25"
PS-D54-Y-L2120	20	3 Ph Wye 208V/60Hz	(2) L21-20P	(42) IEC C13 (12) NEMA 5-20R	66.0" x 3.5" x 2.25"
PS-D54-Y-L2130	30	3 Ph Wye 208V/60Hz	(2) L21-30P	(42) IEC C13 (12) NEMA 5-20R	66.0" x 3.5" x 2.25"
PS-D84-Y-L2120	20	3 Ph Wye 208V/60Hz	(2) L21-20P	(84) IEC C13	66.0" x 3.5" x 2.25"
PS-D84-Y-L2130	30	3 Ph Wye 208V/60Hz	(2) L21-30P	(84) IEC C13	66.0" x 3.5" x 2.25"

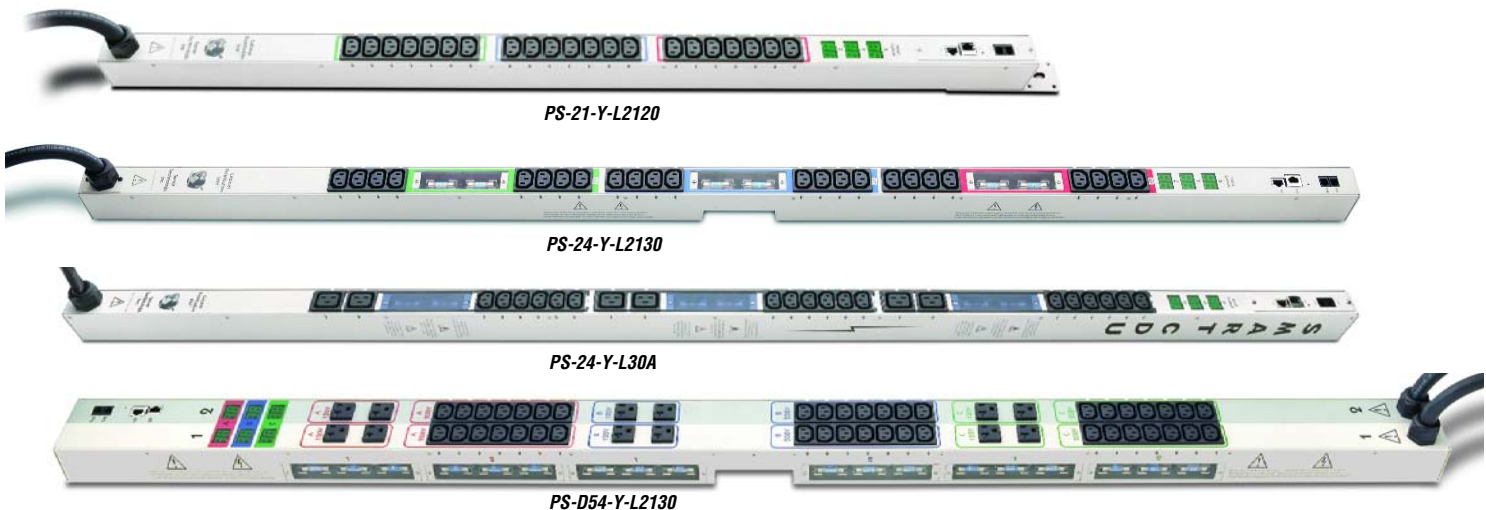


NEMA L21-20 Plug



NEMA L21-30 Plug

208/3Ph



HORIZONTAL

208V Horizontal Units - 19" Rack-mount

Part Number	Amps	Input Voltage Range	Input Connection	Receptacles	Dimensions
PS-D12H-2-L630	30	208-240V 60Hz	(2) L6-30P	(12) IEC C19	3.5" x 17.0" x 7.0"



30 Amp L6-30 Dual Input Cord

208V 3-Phase Wye - Horizontal Units - 19" Rack-mount

Part Number	Amps	Input Voltage Range	Input Connection	Receptacles	Dimensions
PS-D12H-Y-L2130	30	3 Ph Wye 208V/60Hz	(2) L21-20P	(12) IEC C19	3.5" x 17.0" x 7.0"



30 Amp/3 PH L21-30 Input Cord



Network/Environmental Ports on backside of units

Remote Power Monitoring



Power Cords & Environmental Monitoring Sensors

Power Cords - Source to C20 Inputs

Part Number	Description
PCS-01	Input Cord for C20 Inlet - IEC C19 to NEMA 5-15P, 120V, 10' Length
PCS-02	Input Cord for C20 Inlet - IEC C19 to NEMA 5-20P, 120V, 10' Length
PCS-03	Input Cord for C20 Inlet - IEC C19 to NEMA L5-20P, 120V, 10' Length
PCS-04	Input Cord for C20 Inlet - IEC C19 to NEMA L6-20P, 208V, 10' Length



NEMA 5-15P



NEMA 5-20P



NEMA L5-20P



NEMA L6-20

Power Cords - IEC Equipment to PDU

Part Number	Description
PCE-18	Equipment Cord - IEC C14 to IEC C13 - 18" (1.5 ft.) Length
PCE-36	Equipment Cord - IEC C14 to IEC C13 - 36" (3 ft.) Length
PCE-72	Equipment Cord - IEC C14 to IEC C13 - 72" (6 ft.) Length



Environmental Monitoring Sensors

Part Number	Description
E-THM-1	Temperature/Humidity Probe, 10' Length



Mounting



Button Mounting - All vertical mount "Zero U" PDUs offer quick installation button mounting. The button mounts slide into key-hole slots in the cabinet or on brackets mounted in the cabinet. Electrorack offers a wide variety of brackets that allow the plug orientation of both vertical and rack-mount horizontal PDUs to face toward the center, front or rear of the cabinet.

Technical Specifications

Standards

- > CTUVus - UL 60950-1-2003
- > CAN/CSA 22.2 No. 60950-1:2003
- > TUV_GS - EN60950-1:2001
- > FCC Class A Part 15
- > CE
- > EMC-EN 55022 Class A, EN 55024

Communications

- > 10/100 BaseT Ethernet
- > SSLv3/TLSv1
- > SNMPv2
- > HTTP/HTTPS
- > SSHv2
- > Telnet
- > TACACS+



Every effort has been made to ensure the information contained herein is correct. Electrorack reserves the right to modify product specifications without notice and assumes no responsibility for any errors which may appear in this publication.