



## Sun Enterprise Class Enclosures

T-Rax enclosures are designed to serve the needs of Sun Microsystems users everywhere while meeting the challenge of racking a multitude of components in a single footprint. Sun servers, data storage devices, networking components and PC's (Dell, HP and IBM) can now all live together in a single, rock-solid unit.

T-Rax combines durability and cost-effectiveness to provide an enclosure that redefines value in the Sun world. Thoughtful engineering work has led to several ease-of-use improvements. We looked at everything from the ground up to change the user experience with our enclosure. Easier installations, maintenance and reconfigurations are now the rule, not the exception.

In your world, one size doesn't fit all. T-Rax provides you an advanced system that let's you pick the rack units that you need (38 or 44), the power that you need and the accessories that you need. Nothing more. Nothing less.

## Key Features

- **2000 lbs. load capacity with dual anti-torque struts.**
- **Numbered rails in the front and back to ease the installation leveling process – simple but critical.**
- **Split rear doors that open 180 degrees for easy server access, without blocking the aisle.**
- **Vertically split, hinged, removable side doors for equipment additions, cable re-routing and server maintenance.**
- **Hand adjustable EIA mounting angles with preset positions for Sunfire, Storage and PCs for easy installations.**
- **Split, half-height vertical rails allow different equipment types in the top and bottom halves of the enclosure.**  
Old and new Sun servers can co-exist in one footprint.
- **Lockable doors that all share the same key.**
- **Square hole VMA kit for Dell, HP and IBM servers.**



TR-67

TR-77

*Available in two pre-configured heights - 38 and 44U, T-Rax's unique, integrated features and rugged 12 gauge construction provide a cost-effective third party alternative to store Sun hardware.*



*T-Rax's easy-to-use split hinged side panels simplify equipment and cabling access while reducing the strain of lifting heavy panels. Sides are lockable and can be completely removed if required.*



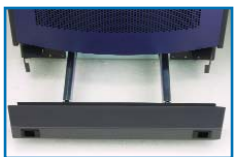
### Design Features



**Half-height, Infinitely Adjustable EIA Angles** - Hand-turn knobs allow for tool-less adjustment of rail spacing. The split height rails allow for varying equipment depths within the same enclosure. Optional square hole rails (shown) accommodate Dell, IBM and HP servers.



**Numbered EIA Spacing** - ease the installation levelling process by quickly identifying rack positions in the enclosure. No more counting screw holes or repositioning equipment to ensure it is level.



**Integrated, Retractable Anti-tip System** - a sturdy, easily accessible device allows extension for safe equipment maintenance and retraction to avoid possible tripping often associated with non-retractable systems.



**Rugged 12 Gage Reinforced Base** - provides a solid foundation for shipping loaded equipment and housing low profile 3" heavy-duty casters and retractable anti-tip device. Openings in the base allow for cable entry into the enclosure.



**Dual, Split Perforated Rear Doors** - hinge 180 degrees allowing full access to equipment without blocking the aisle. 68% open area conforms to third party rack airflow requirements. A three-point locking latch system provides added security and helps prevent tampering.



**Packaging & Integration** - optional crating service is ideal for integrators looking to load equipment and re-ship. A vast assortment of accessories can ship pre-installed, reducing on-site installation costs, including:

- Power
- Shelves
- Filler Panels
- Lacing Bars
- Copper Buss Bars

### Specifications/Ordering Information

#### Frame Assemblies - Base Units

	TR-67	TR-77
Rack Units	38U	44U
Height Usable	66.5"	77"
Height Overall	75"	85.5"
Width Usable	19" EIA	19" EIA
Width Overall	24"	24"
Depth Usable	34"	34"
Depth Overall	36"	36"
Weight	400 lbs.	425 lbs.

Material 12 gauge cold rolled steel

Note: Expansion units (no sides) are also available.

#### Base

Casters	3" DIA ball bearing casters 500 lb load rating each (2000 lb total)
Levelers	Heavy duty 1/2-13 thread 1/2-13 thread Heavy-duty, pull out, integrated into base
Anti-Tip	Heavy-duty, pull out, integrated into base
Levelers Material	12 gauge cold rolled steel, zinc plated

#### Mounting Angles

11 gauge cold rolled steel-zinc plated  
10-32 tapped on EIA spacing  
Sun compliant vertical mounting angles  
Half-height Vertical Mounting Angles (VMA)  
Tool-less, infinite VMA adjustment  
Optional Dell, HP, IBM (square hole) rail kit (12

#### Doors

Front	Radiused surface mounted mesh front door Mesh is >68% perforated Quick release pin hinge Key lock and finger pull handle 18 gauge cold rolled steel
Rear	Split mesh rear door Mesh is >68% perforated 2 Point lift and turn latch with key Quick release pin hinges All locks keyed the same as front door

#### Top & Sides

Top	Perforated with fan pattern, maximum 6 fans 18 gauge cold rolled steel Optional fan tray with (4) 235 CFM fans (940CFM total)
Sides	Vertical-split, surface-mounted hinged side panels with key locks 18 gauge cold rolled steel

#### Crate Option

Dimensions	TR-67 81"HX39"WX48"D	TR-77 92"HX39"WX48"D
Pallet Weight	40 lbs.	40 lbs.

www.electrorack.com

